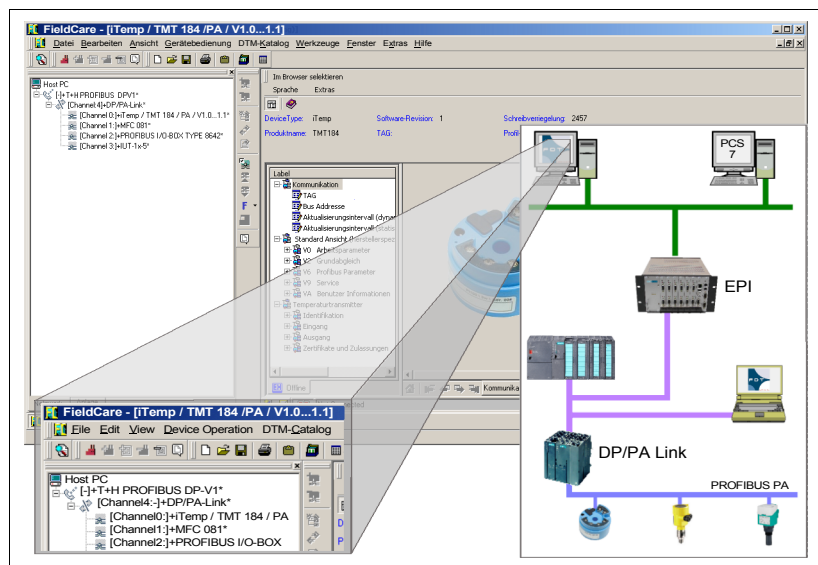


Gateway-DTM for SIMATIC® DP/PA Link

FDT – Field Device Tool | DTM – Device Type Manager

- PROFIBUS PA field device configuration – easy, quick and efficient
- Continuous planning regardless of link or coupler use
- Easy parameterizing, calibration as well as commissioning, diagnosis and maintenance of field devices
- FDT/CommDTM integration via PACTware, FieldCare or any FDT container
- Scan functionality as well as setting of PROFIBUS field device address



SIMATIC DP/PA links, frequently used in process technology and process engineering plants, are essential structural elements in complex network structures for transition from PROFIBUS DP to PA. The available T&H Gateway-DTM can be implemented into all FDT frame applications according to FDT specification 1.2, functioning as a device driver which enables DP-V1 communication with devices at the DP/PA link and their device DTMs. Additionally, the Gateway-DTM supports scans for connected devices. These are shown in a list, and the respective address can be altered.

The Gateway-DTM considerably facilitates configuration, parameterization and calibration as well as commissioning, diagnosis and maintenance of field devices. In addition, the Gateway-DTM allows consistent and continuous planning, regardless of any link or connector application.



Ordering Codes and Prices

Software *	
PROFIBUS Gateway DTM DP/PA Link 1 DP/PA Link online ¹⁾	EUR 0
PROFIBUS Gateway DTM DP/PA Link 2...5 DP/PA Links online ²⁾	10002280 EUR 1,250
PROFIBUS Gateway DTM DP/PA Link 6...25 DP/PA Links online ³⁾	10002281 EUR 3,750
PROFIBUS Gateway DTM DP/PA Link 26...50 DP/PA Links online ⁴⁾	10002282 EUR 6,250
PROFIBUS Gateway DTM DP/PA Link 51... DP/PA Links online	on request

* Operating systems: Windows NT | Windows 2000 | Windows XP

1) for max. 64 PROFIBUS PA field devices online | als free download - <http://www.t-h.de>

2) for max. 320 PROFIBUS PA field devices online

3) for max. 1,600 PROFIBUS PA field devices online

4) for max. 3,200 PROFIBUS PA field devices online

FDT/DTM Development/ Training FDT/DTM Development Services and/or Training (incl. Inhouse)	on request
--	------------

Accessories

CommDTM PROFIBUS DP-V1 Software *	see data sheet ETHERNET-PROFIBUS-INTERFACE
Siemens CP5512/CP5611 PC Card Interface **	
ETHERNET-PROFIBUS-INTERFACE ***	

* Operating systems: Windows 2000 | Windows XP | Windows Server 2003

** PROFIBUS Master interface

*** IPC with PROFIBUS Master interface (CompactPCI), software pre-installed, number of PROFIBUS Master interfaces: 1...12

Trebing & Himstedt Prozeßautomation GmbH & Co. KG

Wilhelm-Hennemann-Strasse 13

D-19061 Schwerin, Germany

Telephone: +49-385-3 95 72-0

Fax: +49-385-3 95 72-22

E-Mail: info@t-h.de

Internet: <http://www.t-h.de>