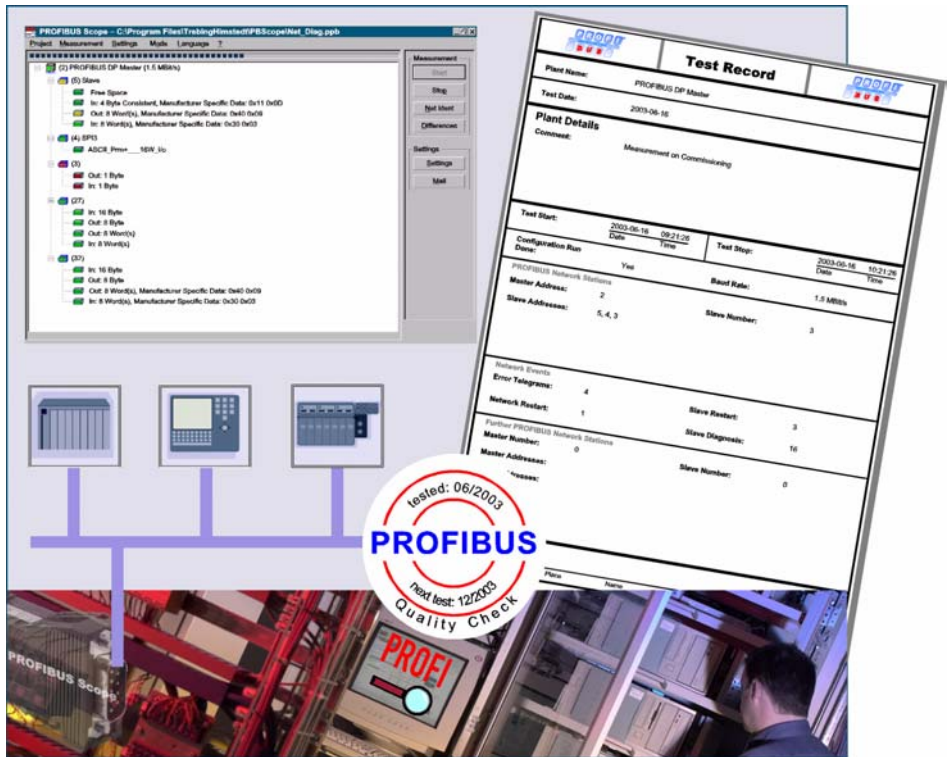


PROFIBUS Scope

Diagnosis – Analysis – Qualification

- Network quick check for immediate and actual state analysis
- Factory Acceptance Test / Site Acceptance Test with documentation of network status
- FDA validation / life-cycle support (IQ | OQ | PQ)
- Modification and configuration tracking – change management
- Diagnosis and long-term monitoring for service and maintenance with e-mail notification
- Protocol analysis and graphical network diagnosis
- Extensive filter and trigger functions as well as Live List
- Education and training tool



NEW
 DP-V2



The PROFIBUS Scope is an indispensable tool for commissioning, FAT/SAT and acute troubleshooting of PROFIBUS installations. Regular or permanent network monitoring allows identification of any failures at a very early stage, and enables you to take measures for preventive maintenance. This in turn minimizes downtime and increases plant and equipment availability. Plants that have to meet special qualification requirements can be monitored and documented throughout the entire life cycle. Quality assurance is provided manufacturer independent for all critical network parameters (cycle times, device diagnoses, error telegrams ...). This ensures quick identification of configuration failures upon device replacements or extensions. Extensive trigger functions and record filters allow complex troubleshooting. Typical failures such as double station addresses, short circuits, twisted wires or wrong bus terminating resistors can be identified due to their characteristic fault patterns. An extensive online help provides valuable support for the user. Standard CP5611/CP5512 Siemens PC cards as well as PGs with integrated CP5611 serve as a respective hardware platform. The PROFIBUS Scope has already proved its worth in numerous training and competence centers, service and R&D departments of field device manufacturers and system suppliers.

Automobile Industry

BMW, Bosch, Continental, DaimlerChrysler, VW ...

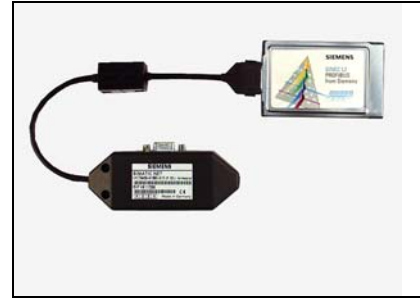
System Providers

Mannesmann, Kuka, Phoenix Contact, Siemens ...
 ABB, AZO, Emerson, Endress+Hauser, Hauni, InfraSerV, Invensys, Jagenberg, KHD, KRUPP

Pharmal/Chemicals/Food

Bayer, Biochemie, Celanese, Coca-Cola, Henkel, Masterfoods, Merck, Roche Diagnostics ...

PROFIBUS Scope Hardware



		CP5611	CP5512
Siemens PC card		Short PCI bus card	PC card type 2 (CardBus, 32 Bit)
Protocols		DP, DP-V1, DP-V2, FMS, FDL/MPI, PA	DP, DP-V1, DP-V2, FMS, FDL/MPI, PA
Max. baud rate	Mbit/s	12	12
Operating system		Windows 2000 XP Server 2003	Windows 2000 XP Server 2003